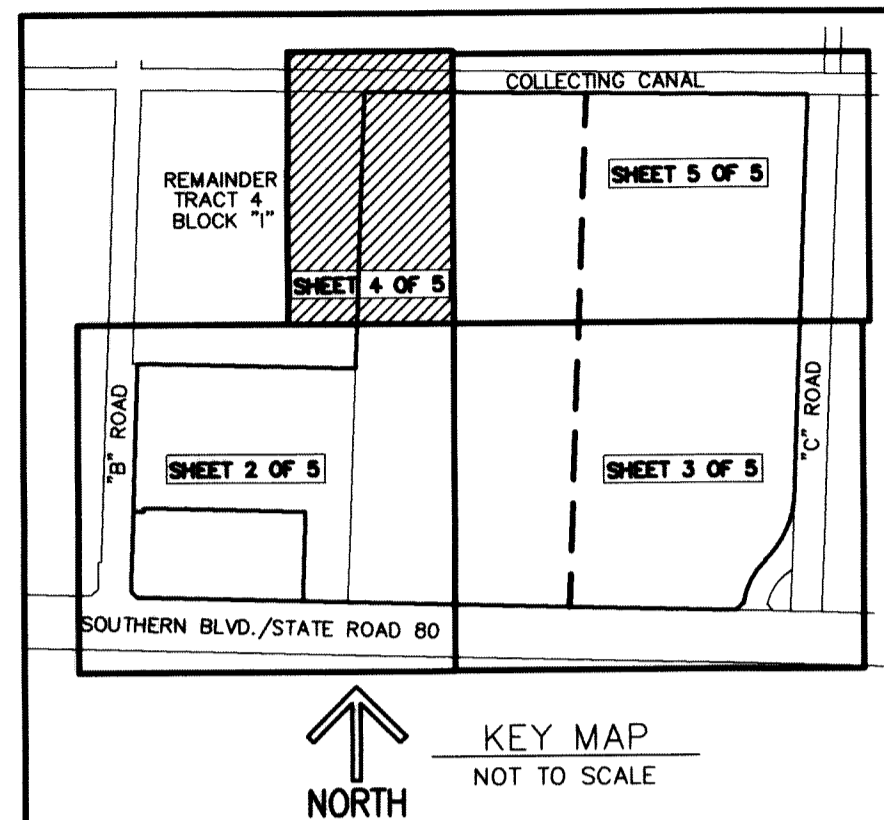


GROVES TOWN CENTER PUD AMENDMENT NO. 1

BEING A REPLAT OF GROVES TOWN CENTER PUD, LESS TRACT POD A AND LESS TRACT LB3, ACCORDING TO THE PLAT THEREOF AS RECORDED IN PLAT BOOK 128, PAGE 66, PUBLIC RECORDS OF PALM BEACH COUNTY, FLORIDA. LYING IN SECTION 31, TOWNSHIP 43 SOUTH, RANGE 41 EAST, THE TOWN OF LOXAHATCHEE GROVES, PALM BEACH COUNTY, FLORIDA

137

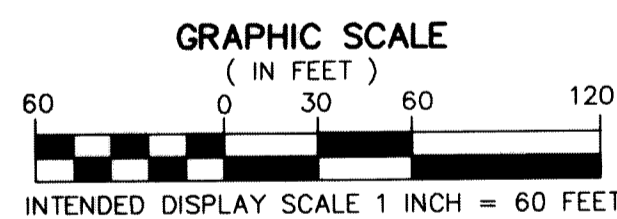
THIS INSTRUMENT PREPARED BY
RONNIE L. FURNISS
OF
CAULFIELD and WHEELER, INC.
SURVEYORS - ENGINEERS - PLANNERS
7301-A WEST PALMETTO PARK ROAD, SUITE 100A
BOCA RATON, FLORIDA 33433 - (561)392-1991
LB #3591



NOTES

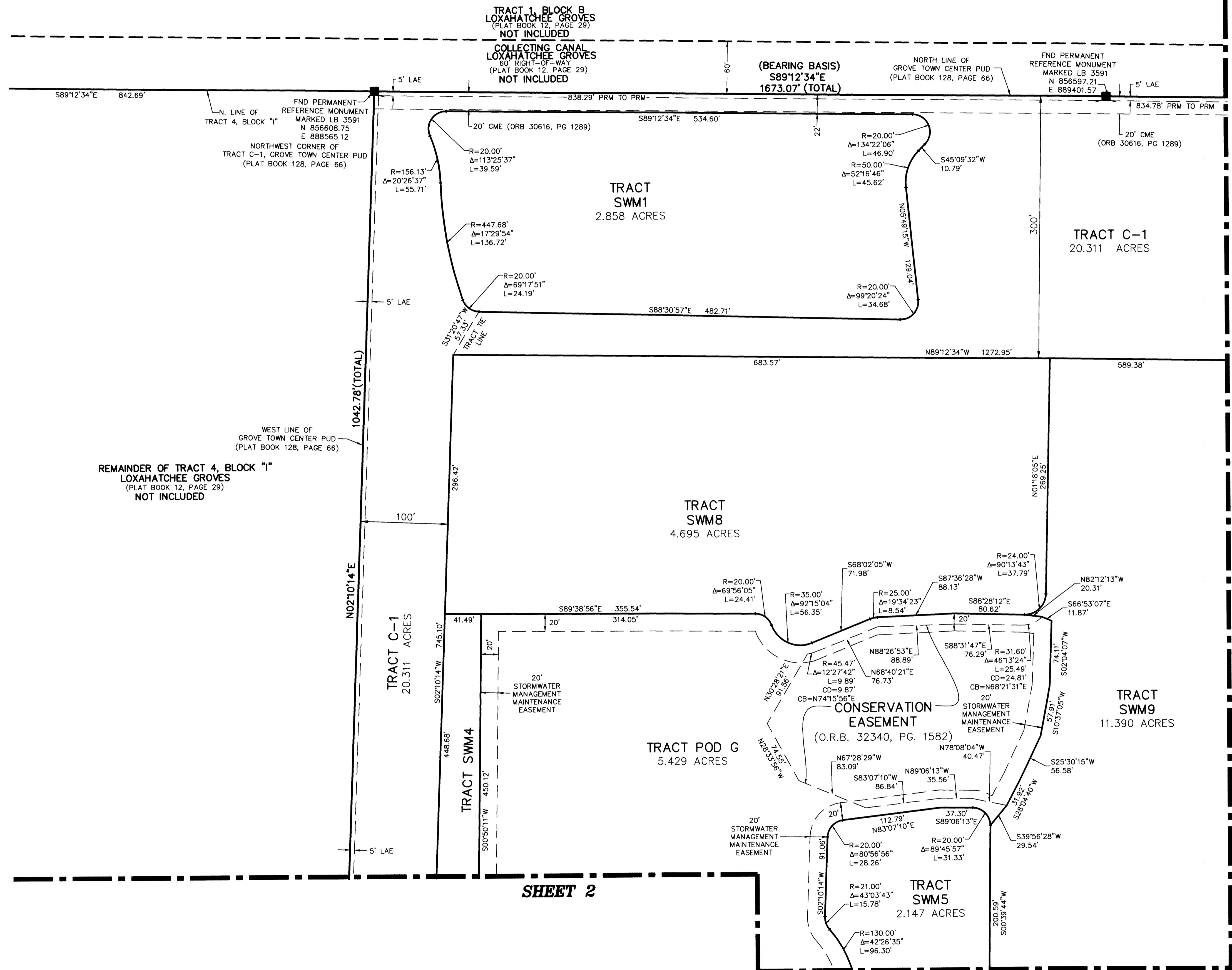
COORDINATES, BEARINGS AND DISTANCES

COORDINATES SHOWN ARE GRID
DATUM = NAD 83 2002 ADJUSTMENT
ZONE = FLORIDA EAST
LINEAR UNIT = US SURVEY FEET
COORDINATE SYSTEM 1983 STATE PLANE
TRANSVERSE MERCATOR PROJECTION
ALL DISTANCES ARE GROUND
SCALE FACTOR = 1.000002
GROUND DISTANCE X SCALE FACTOR = GRID DISTANCE
ROTATION EQUATION:
SOUTH 89°12'34" EAST (PLAT)
SOUTH 89°12'33" EAST (GRID)
PLAT TO GRID BEARING = 00°00'01" CLOCKWISE
COORDINATES SHOWN ON THE CONTROL P.R.M.S MEET OR EXCEED THE LOCAL ACCURACY REQUIREMENTS OF A 2 CENTIMETER GEODETIC CONTROL SURVEY.
COORDINATE VALUES SHOWN ARE PER SIMON TRUST BOUNDARY PLAT PLAT BOOK 116, PAGE 26



LEGEND:

- BM - BENCHMARK
- CME - CANAL MAINTENANCE EASEMENT
- F.D.O.T. - FLORIDA DEPARTMENT OF TRANSPORTATION
- FND. - FOUND
- FPL - FLORIDA POWER & LIGHT
- LAE - DENOTES LIMITED ACCESS EASEMENT
- LB - LICENSED BUSINESS
- LB.E. - DENOTES LANDSCAPE BUFFER EASEMENT
- N.T.S. - DENOTES NOT TO SCALE
- NGVD 29 - NATIONAL GEODETIC VERTICAL DATUM OF 1929
- NAVD 88 - NORTH AMERICAN VERTICAL DATUM OF 1988 (NAVD 88)
- O.R.B. - DENOTES OFFICIAL RECORDS BOOK
- (P) - DENOTES PLAT
- P.B. - DENOTES PLAT BOOK
- PBCUE - PALM BEACH COUNTY UTILITY EASEMENT
- PG. - DENOTES PAGE
- Δ - DENOTES DELTA (CENTRAL ANGLE)
- L - DENOTES ARC LENGTH
- R - DENOTES RADIUS
- R/W - DENOTES RIGHT-OF-WAY
- SF - DENOTES SQUARE FEET
- S.R. - DENOTES STATE ROAD
- UE - INDICATES UTILITY EASEMENT.
- P.R.M. ■ - INDICATES 4" X 4" X 24" PERMANENT REFERENCE MONUMENT MARKED LB 3591, UNLESS OTHERWISE NOTED
- ⊙ - INDICATES NGS SURVEY BENCHMARK.
- - DENOTES PERMANENT CONTROL POINT



SHEET 4 OF 5

SHEET 5

SHEET 2

SHEET 3